

**LFP-G**  
**Flat rope hand winding machine**  
 扁绳手挽机

**简介:**

本机专为纸袋拎手而研制的新一代手挽机。该机是将纸绳夹在两层牛皮纸中间，经过涂胶、压合、再自动分切成单个手挽。是手提纸袋机生产线的理想配套产品。

**Introduction:**

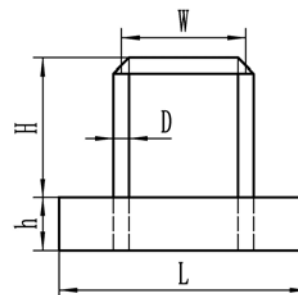
machine was developed specifically for the new generation of paper Handle Machine. This machine is sandwiched between two layers of kraft paper rope middle, after gluing, lamination, and then automatically cut into a single handle. Paper bag machine is the ideal complementary product lines.

**特点：**

1. 使用热熔胶不易脱落。
2. 操作方便，速度快

**Features:**

1. use Hot-melt glue not falling.
2. easy to operate, fast.

**技术参数 Technical Parameter:**

机型	Type	LFP-G-1	LFP-G-2
纸绳间距 (W)	Handle Spacing (W)	95 mm	92/107mm
纸片长度 (L)	Paper Board Length (L)	152 mm	190 mm
纸片宽度 (h)	Paper Board Width (h)	40 mm	
纸绳宽度 (D)	Paper Rope Width (D)	12 mm	
纸绳高度 (H)	Rope Height (H)	100 mm	
最大速度	Max.Speed	100 pcs/min	
纸张克重	Paper Thickness	80-120 gsm	
最大纸卷直径	Max.Roll diameter	700 mm	
纸卷内径	Reel inner diameter	76 mm	
总功率	Total Power	10 Kw	
机器重量	Weight of Machine	2800 kg	
外形尺寸	Overall	5000×1500×1500 mm	