

LSB-320XL+LST-41100

Roll Feeding Flexo Printing Square Bottom Paper Bag Making Machine

卷筒纸方底柔版印刷纸袋机

**简介:**

该纸袋机是将卷筒纸经过印刷图案、涂边胶、折叠成筒、纸筒切断、底部折叠、底部涂胶、袋底成形、成品袋输出、印刷、制袋一次完成。该机由PC伺服控制系统控制、触摸屏人机界面实时显示，可生产多种规格纸袋。它具有速度快、更换纸袋规格快、调节范围大等优点，是生产食品袋、手提购物袋最理想的首选设备。

Introduction:

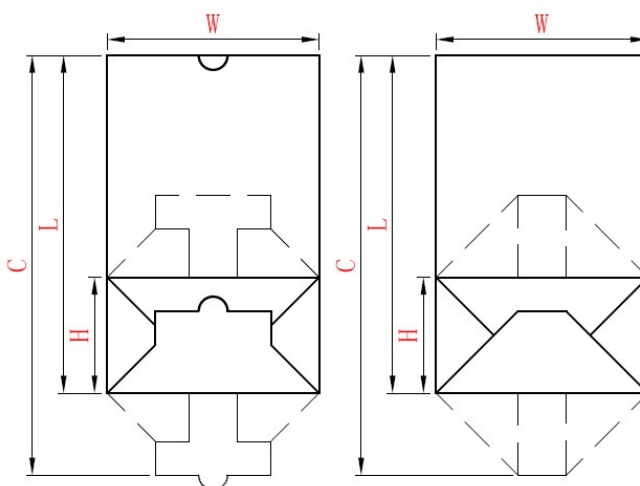
The paper bag making machine from the roll paper to the printing, side gluing, roll folding, roll paper cutting, bottom folding, bottom gluing, bottom forming, bag formation at a stroke. This machine controls by PC programmable servo motor through the human-machine touch screen interface. It can produce various of specifications paper bags. This machine have advantages of high speed, quickly replace the paper bag specifications, more wide range adjusting etc. It is an ideal machine for producing food bag, shopping handles bag.

特点：

1. 触摸屏人机界面，工作状况实时显示。
2. 超精密伺服控制系统，确保机器稳定、高效运行。
3. 材料装卸采用气动升降结构。
4. 全自动恒张力控制系统，张力从始至终丝毫不差。
5. 双光电传感器限位自动纠偏控制系统，纠偏稳定、节能、寿命长。
6. 拇指扣、平贴底切割装置，制袋类型多种选择。
7. 不停机轮毂侧夹同步调整结构，调整侧夹将变得非常简单、快速。
8. 涂胶辊防空涂控制，避免胶水直接涂刷轮毂表面，减少不必要的麻烦。
9. 精确的色标跟踪系统，色标错误自动停机。
10. 自动润滑供油系统。
11. 墨水循环式封闭刮墨刀刮墨。
12. 传墨采用陶瓷网纹辊，高速运行网点再现率高，网版印刷层次分明，立体感强。
13. 按钮式 360° 连续可调纵向套准装置。

Features:

1. The human-machine touch screen interface, the work condition can be shown in real- time.
2. Equipped with accurate servo motor drive, it makes the machine run steadily and efficiently.
3. Material lifting adopt pneumatic lift structure.
4. Automatic constant tension control system. The tension will be just right from beginning to end.
5. Double photoelectric sensor limit automatic correction control system and deviation rectification stability, energy saving, long life.
6. Thumb buttons, appressed bottom cutting device, bag type have many choices.
7. Don't stop machine adjust double bottom structure, the adjustment will become more intuitive, more simple, more time saving.
8. Glue roller air defense coating control, avoid gluing on besmear brushes hub surface directly, reduce unnecessary trouble.
9. Accurate color tracking system, color errors automatically shut down.
10. Automatic lubricating oil supply system.
11. ink-ring sealed scraping knife scraping.
12. ink Ceramic Anilox roller, high speed dot rate, screen printed layered, stronger.
13. button-360 ° continuous and adjustable longitudinal register device.

**技术参数 Technical Parameter:**

机型	Type	LSB-320XL+LST-41100
制袋宽度 (W)	Bag Width (W)	140-320 mm
袋底宽度 (H)	Bottom Size (H)	100-220 mm
切割长度 (C)	Bag tube length (C)	450-820 mm
制袋长度 (L)	Bag Length (L)	$L=C-(H \div 2 + 15 \sim 25)$
最大制袋速度	Max.Speed	120 pcs/min
纸张克重	Paper Thickness	60-170 gsm
纸卷宽度	Paper Roll Width	500-970 mm
最大纸卷直径	Max.Roll diameter	1200 mm
纸卷内径	Reel inner diameter	76 mm
印刷颜色	Printing Color	4 Color
最大印刷宽度	Printing Width	1100 mm
印刷长度	Printing Length	160-800 mm
最大印刷速度	Max.Printing Speed	120 m/min
套印精度	Overprint Precision	± 0.15 mm
版材厚度	Thickness of Plate	1.7 mm
总功率	Total Power	19.5 kw
机器重量	Weight of Machine	9500 kg
外形尺寸	Overall Dimension(LxWxH)	13000x1850x1950 mm

注意:

制袋速度取决于材料和胶粘剂的品质、纸袋尺寸、操作员的工作知识和工作方法。

Note:

Machine speeds dependent on paper & adhesive qualities, bag dimensions, operator knowledge, and general work philosophy.